

STONEWATER®

ADOLESCENT

RECOVERY CENTER

The Stonewater Process for Therapeutic Consultants

An Explanation Guide



Pre-Admission

STONEWATER®

ADOLESCENT

RECOVERY CENTER

EVALUATE

We collaborate with each referent to determine if the client is a fit for the Stonewater program.

LEARN

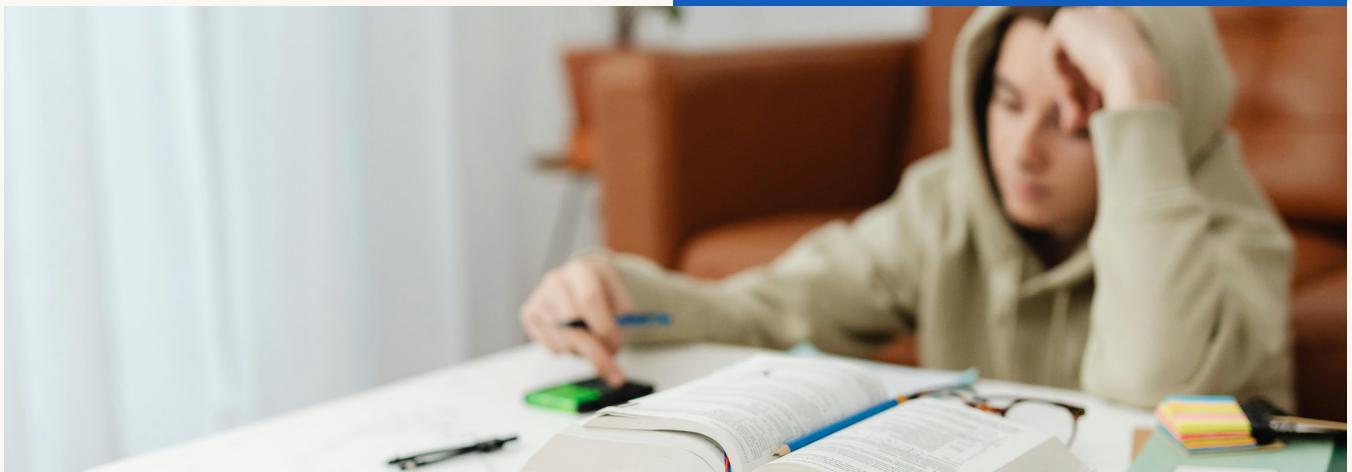
We meet the family on a family discovery call. We listen to understand the unique details of the family system and what events have led them to seek treatment.

EDUCATE

During the family discovery call, we take time to explain the Stonewater approach and program. We communicate why and how we do what we do and answer questions specific to the family's needs.

FACILITATE

We support the referent in guiding each family, with responsiveness, helpfulness, and trustworthiness.



Admission

STONEWATER®

ADOLESCENT

RECOVERY CENTER

ADMISSION PART I

Upon approval for admission, we provide a Family Welcome Folder to the family to explain exactly what to expect.

ADMISSION PART II

We complete a virtual meeting with the family including various members of our team to review additional details and map out what to expect. Referents are welcome to join.

ASSESS NEEDS

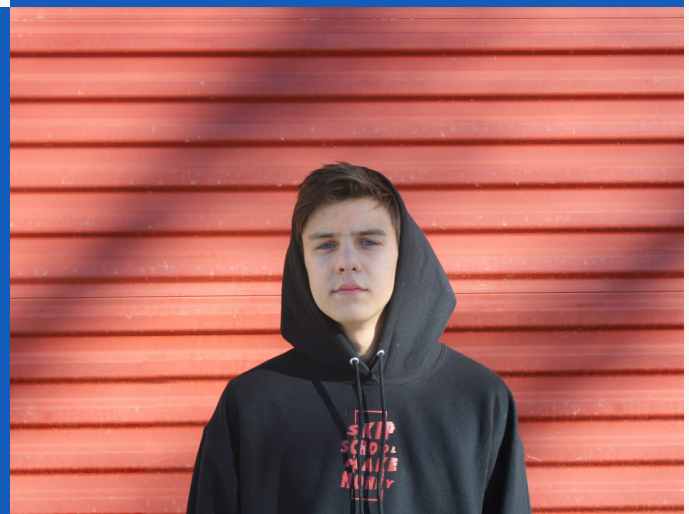
After a detailed download from the referent, our Clinical Team completes assessments separately with the resident and the family.

DEVELOP A PLAN

Our Primary Clinical Therapist, in conjunction with our Interdisciplinary Team, develops an individualized treatment plan including academics and purpose-focused goals.

PROVIDE UPDATES

We review this plan and the progress toward all defined goals with the resident and with the referent on an ongoing basis.





INDIVIDUALIZED

We complete psychological testing with a psychologist for each resident to give diagnostic clarity upon request at no additional cost to the family.

EVIDENCE - BASED

Our program operates from a DBT-informed platform with a variety of experiential modalities, trauma-focused CBT (TF-CBT) and other proven clinical interventions and support.

COLLABORATIVE

We are experts in adolescent-specific clinical, medical, academic and behavioral needs. We foster an environment of love, support, safety and encouragement. Clinically-driven and relationship-based.

SECURE AND SERENE ENVIRONMENT

We have a big, beautiful campus and residential accommodations with opportunities to be outside, be active and have fun.

COMPREHENSIVE PLANNING

Collaborative recovery support planning begins long before discharge and outlines the most supportive plan possible after Stonewater.

LONG-TERM RESULTS

We complete ongoing outcomes measurement and in-app surveys to identify clients that may be at a risk for relapse. We support our residents and their families after their stay through virtual groups, one-to-one phone calls and even an alumni app.



STONEWATER®

ADOLESCENT

RECOVERY CENTER

Let's collaborate and build a solution
for your clients.

CONSULTANT CONTACT

Elizabeth Fikes

Founder, Director of Outreach & Communications

efikes@stonewaterrecovery.com

